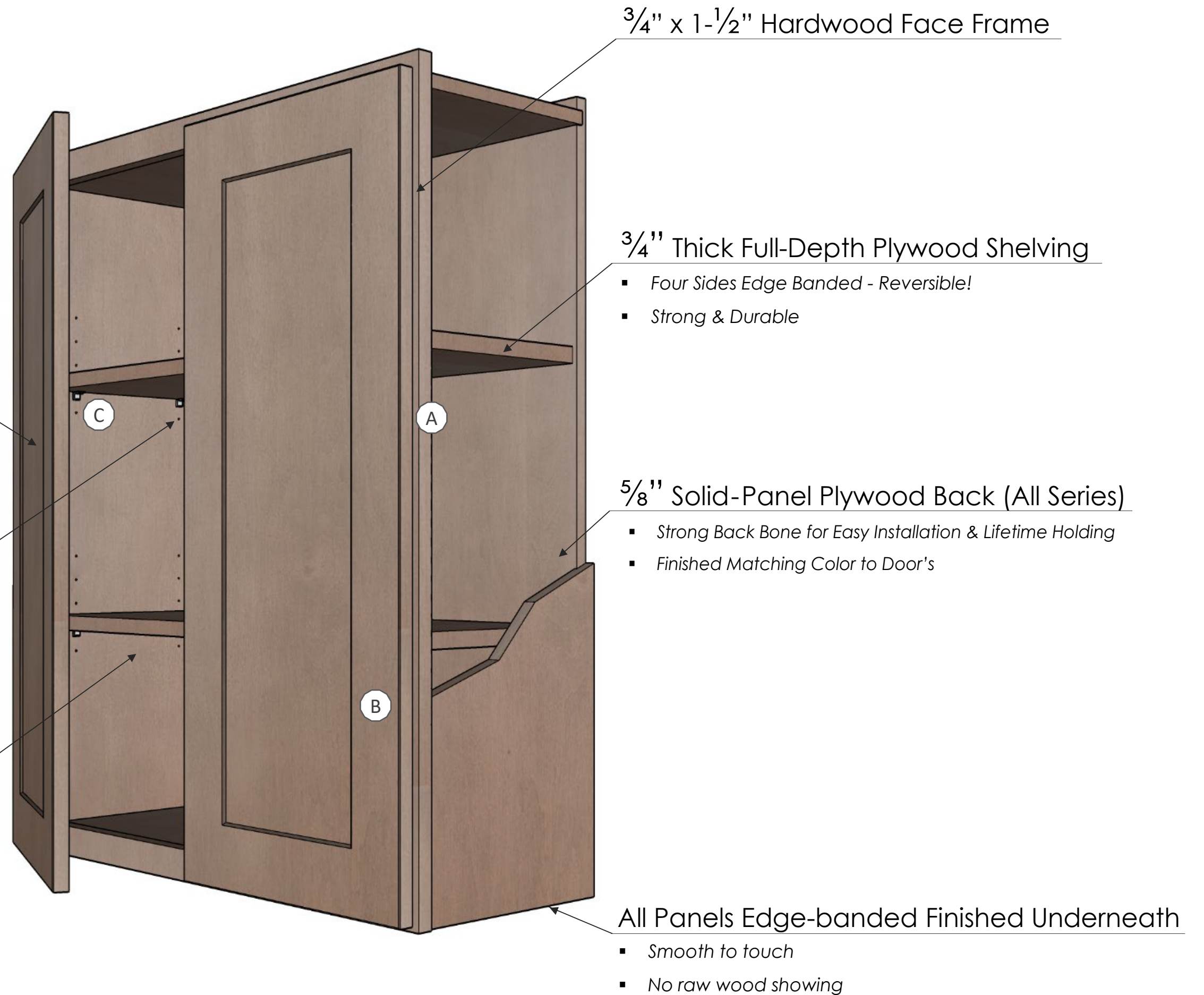




**Akzo Nobel Finishing**  
Renowned for Beauty & Durability

Full Overlay Cabinets  
Tiny Gaps Between Doors & Frames  
Result in Custom-design Kitchens



$\frac{3}{4}$ " x 1- $\frac{1}{2}$ " Hardwood Face Frame

$\frac{3}{4}$ " Thick Full-Depth Plywood Shelving

- Four Sides Edge Banded - Reversible!
- Strong & Durable

$\frac{5}{8}$ " Solid-Panel Plywood Back (All Series)

- Strong Back Bone for Easy Installation & Lifetime Holding
- Finished Matching Color to Door's

Solid Wood Door

(Painted Series Have MDF Middle Panels to Prevent Cracking)

Inconspicuous Shelf Holes

Beauty Starts Even Behind Closed Doors

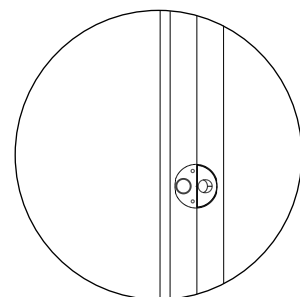
$\frac{5}{8}$ " Thick Color-Matching Plywood Sides

( $\frac{1}{2}$ " for AC series)

- Finished Matching Color Inside-Out to Door's
- Avoiding Tedious & Unstable Skinning
- Strong construction & High End Quality
- Fully Prepped for Glass Doors Any Time Later

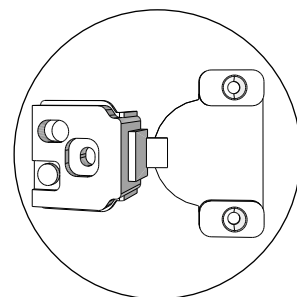
All Panels Edge-banded Finished Underneath

- Smooth to touch
- No raw wood showing



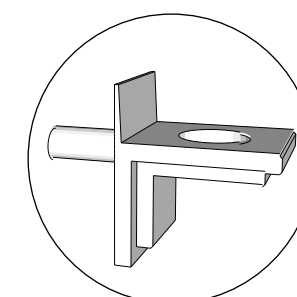
**A** – Patented Hidden Locking System Behind Cabinet Frame for:

- Strong Construction
- Fast Assembly
- Beautiful & Clean Cabinet Boxes



**B** – 6-Way Adjustable, Soft Close Hinges

More Ergonomic & Compact than Standard Industry



**C** – Special Design Metal Shelf Supports

Tiny Strong Pins for Inconspicuous Shelf Foles